

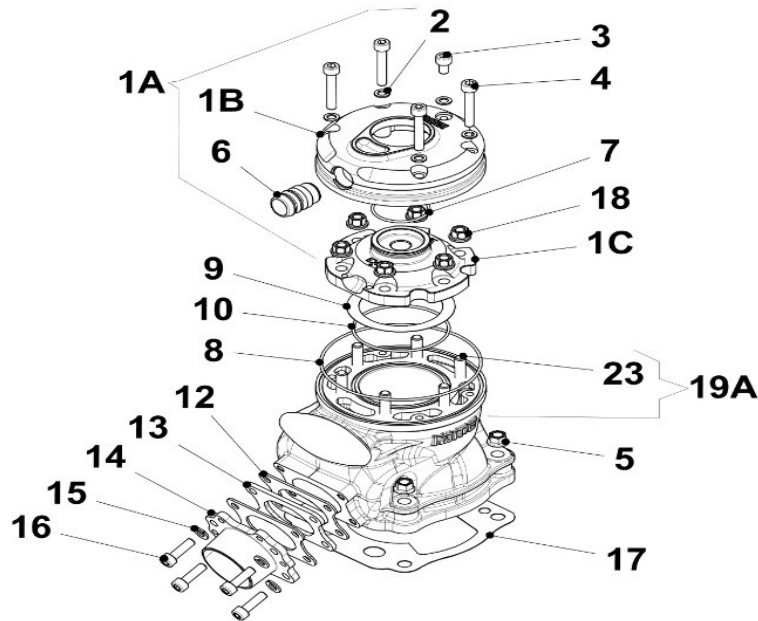
Screamer IV

pos	code	description
	201.652	Engine SCREAMER IV – KZ/KZ2



Screamer IV

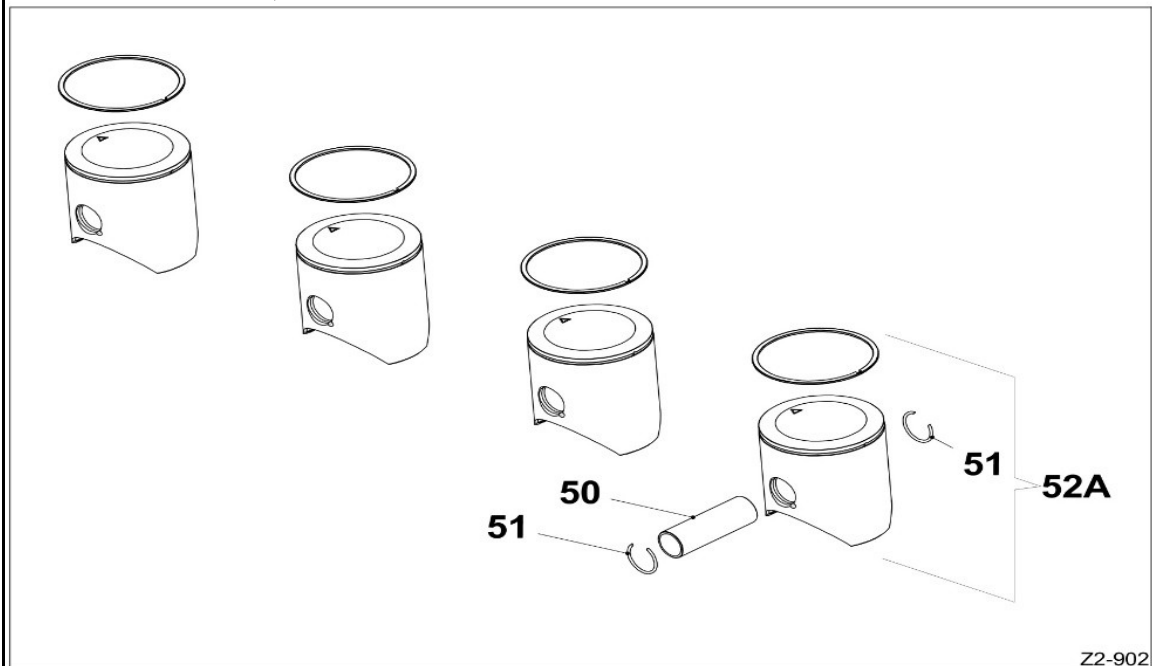
CYLINDER & CYLINDER HEAD



01B	212.029	Head dome cover Screamer
01C	#N/B	#N/B
02	282.200	Copper gasket 6mm
03	900.299	Allen screws 6x10 -INOX- kit
04	900.308	Allen screws 6x35 -INOX-
05	211.201	Flanged nut M8 OK / OKJ 2019 / Screamer
06	213.226	Pipe fitting cylinder head OK - OKJ 2019 / Screamer
07	214.766	Head O-ring dome Scheamer
08	214.765	Head O-Ring 2400 101.32x1.78
09	214.715	Cylinder Head Gasket Reedster / OK / KZ> 0.05
09	214.716	Cylinder Head Gasket Reedster / OK / KZ 0.10mm
09	214.717	Cylinder Head Gasket Reedster / OK / KZ 0.20
10	214.740	HEAD GASKET INT. Reedster OK / KZ
12	214.510	Exhaust gasket Screamer
13	#N/B	#N/B
14	214.514	Exhaust manifold >Screamer<
15	900.081	Exhaust washers M6 >EXHAUST<
16	903.026	KIT OF 20 ALLEN SCREWS 6X20
17	214.110	Base gasket Reedster V OK / OKJ / Screamer 0.05
17	214.111	Base gasket Reedster V OK / OKJ / Screamer 0.10
17	214.112	Base gasket Reedster V OK / OKJ / Screamer 0.20
17	214.114	Base gasket Reedster V OK / OKJ / Screamer 0.40
17	214.115	Base gasket Reedster V OK / OKJ / Screamer 0.50
18	212.616	Head nut m7 Inox OK / OKJ '19 / Screamer
19A	#N/B	#N/B
23	276.211	Cylinder stud M7x39 >Reedster V / Screamer<

Screamer IV

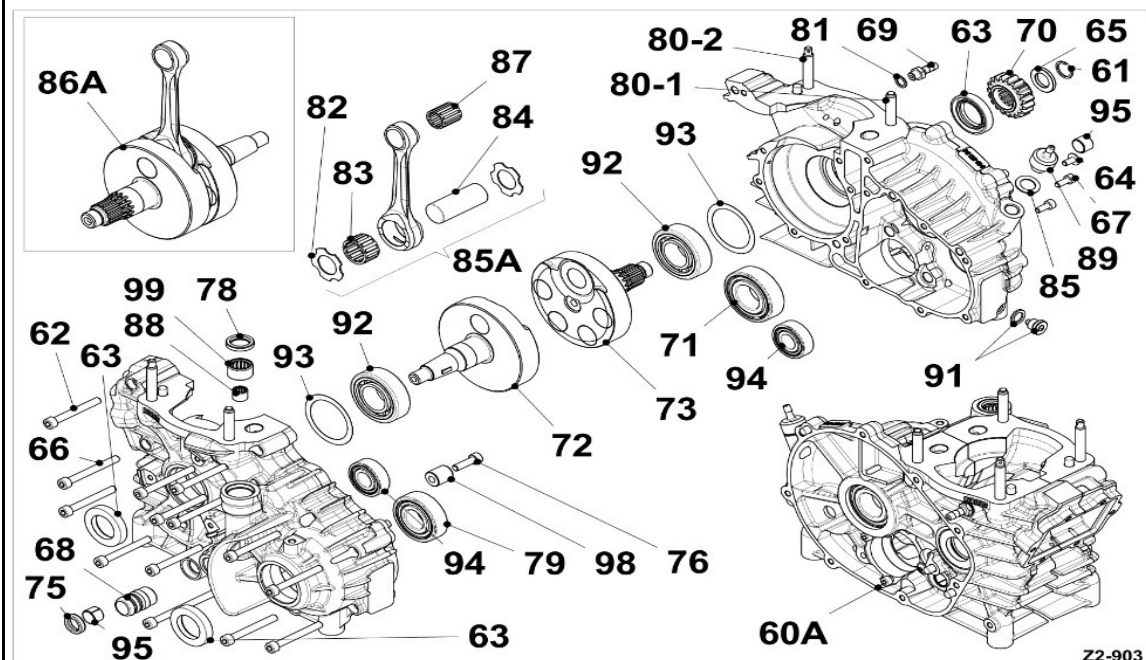
PISTON



050	217.200	Pistonpin Parilla KZ / KF / OK / X30 Shifter
051	218.200	Circlip piston pin >X30 Super-Shifter-OK< >15mm<
052A	216.600	Piston+ring >Screamer<. 53.93
052A	216.601	Piston+ring >Screamer< 53.94
052A	#N/B	#N/B
052A	#N/B	#N/B
052A	#N/B	#N/B

Screamer IV

CRANKCASE & CRANKSHAFT

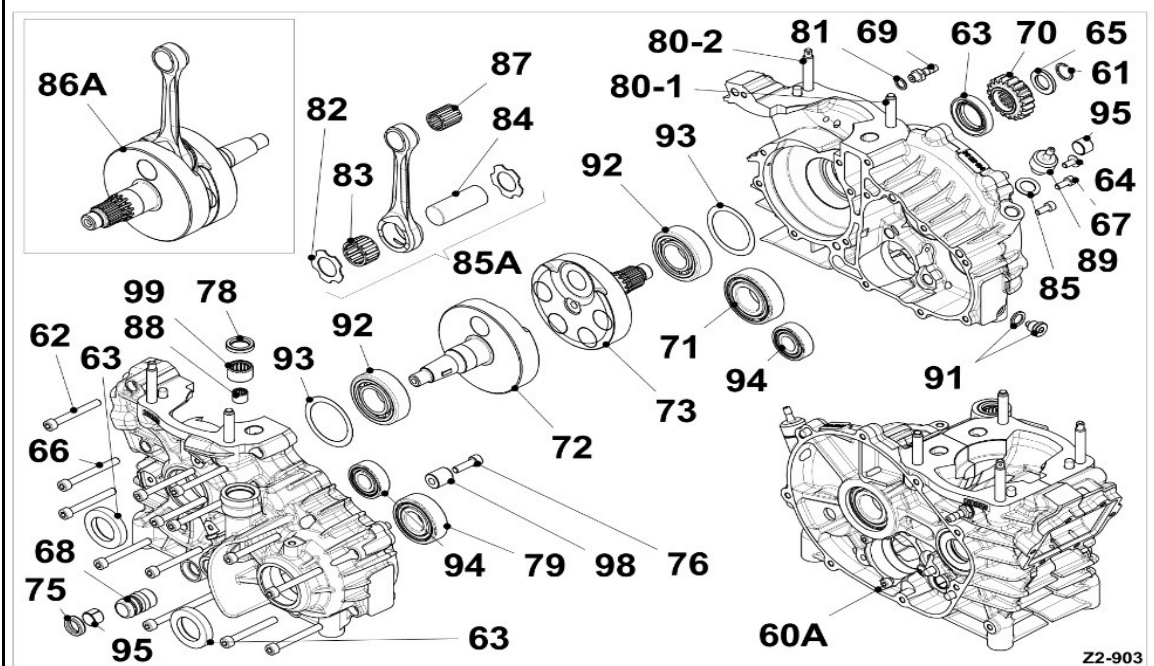


Z2-903

060A	#N/B	#N/B
61	299.437	Seeger ring SW15 Screamer
62	900.239	Hexagon socket bolt 6x50
63	223.510	Oil seal 25x40x7 >Dr.+Magn. side< X30+KF+OK
64	900.289	Bolt TS TORX 5x10
65	299.203	Primary trans. gear spacer >Screamer<
66	900.926	SCREWS 6x55
67	900.215	Hexagon socket bolt 5x20
68	213.220	Hose connection Parilla X30 - OK'19 - OKJ'19
69	228.098	Pressure fitting >X30
70	299.206	Primary transmission sprocket >Screamer - Super Shifter<
71	224.105	Crankshaft bearing 6205 C4 >NSK<
72	#N/B	#N/B
73	#N/B	#N/B
75	299.388	Oil seal gear lever shaft
76	903.026	KIT OF 20 ALLEN SCREWS 6X20
78	299.386	Oil seal selector
79	224.000	Crankshaft bearing 6204 TN9/C4
80/1	276.200	Cylinder head stud M8x35 >S.Shifter / OK / OKJ / Screamer
80/2	#N/B	#N/B
81	228.110	Pressure fitting gasket 8mm >OK / X30 / KZ<
82	KA44	SILVER BRONZE WASHER
83	221.200	Big-end cage >X-30 / OK / KF / KZ<
84	220.106	Crankpin 20x48.8 OK-OKJ >S1699/1<
85	228.112	Pressure fitting gasket >Screamer / X30 Super<
85A	219.350	Conrod 110mm complete >Screamer<
86A	#N/B	#N/B

Screamer IV

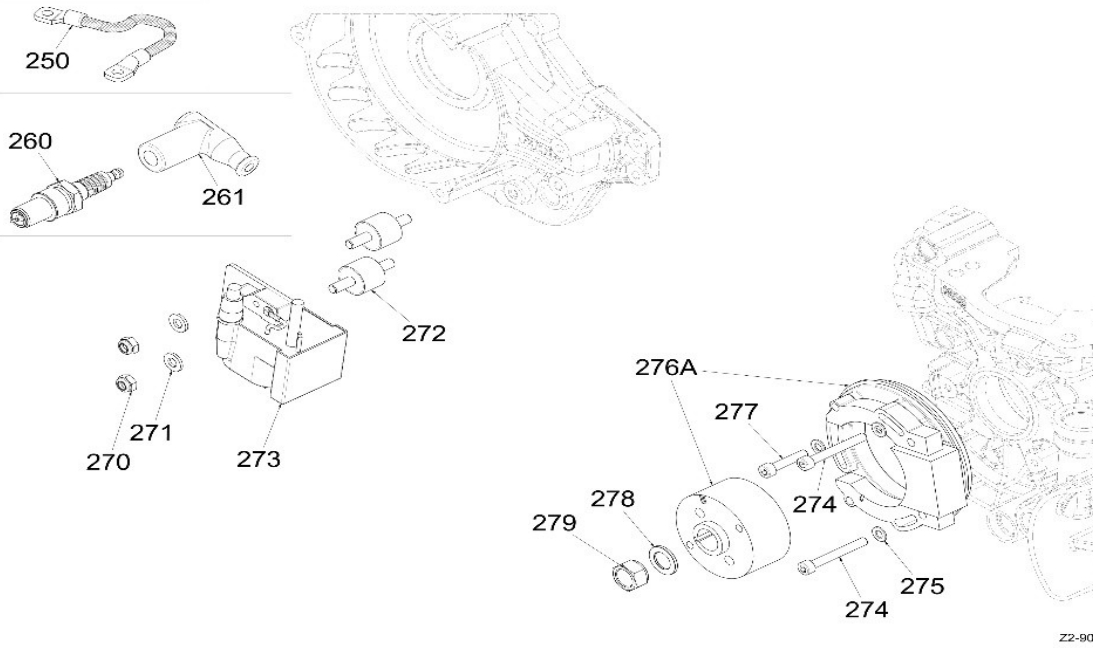
CRANKCASE & CRANKSHAFT



87	277.205	Little end cage >X30 Shifter / KZ / OK<
88	291.710	Roller cage for bendix X30 - Mini Pro-M
89	228.099	Oil drain / refill plug Screamer/ X30 Super
91	299.690	Plug for oil release with magnet
92	224.110	Crankshaft bearing roller type 6205 BC-1
93	KA38	STEEL SHIM 0.15
93	225.100	Shim 52x0.10
94	299.210	Bearing balance shaft X30 6202 TN9/C4H
95	299.448	Bush MU TFP 1210
98	299.419	Shifting drum support
99	299.384	Needle bearing HK1412 for selector

Screamer IV

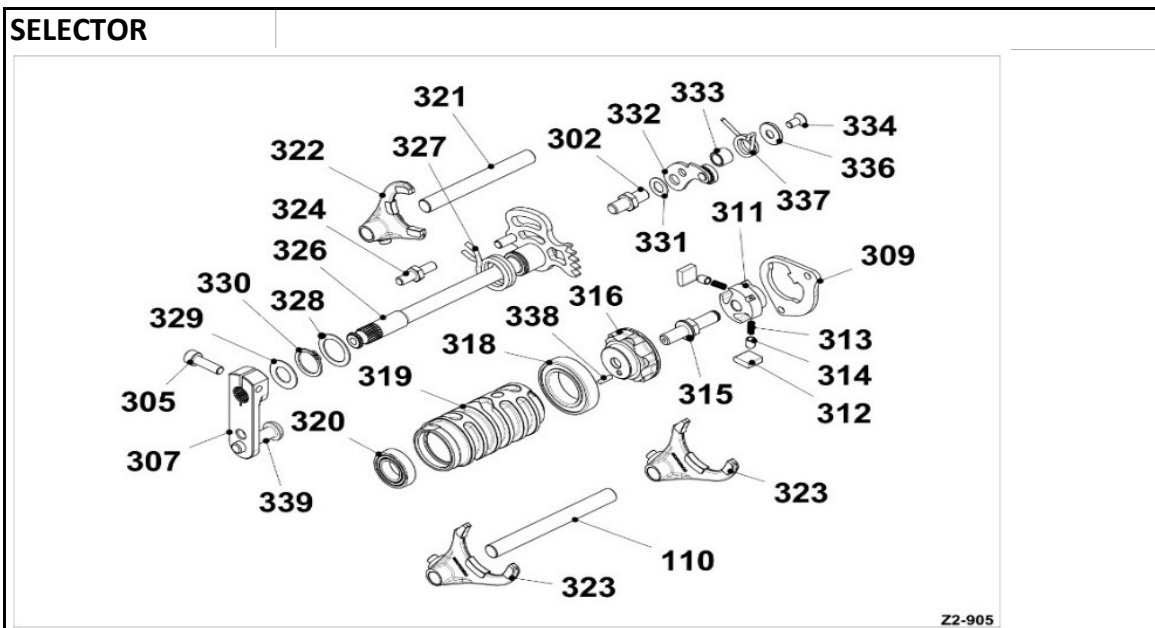
IGNITION



Z2-904

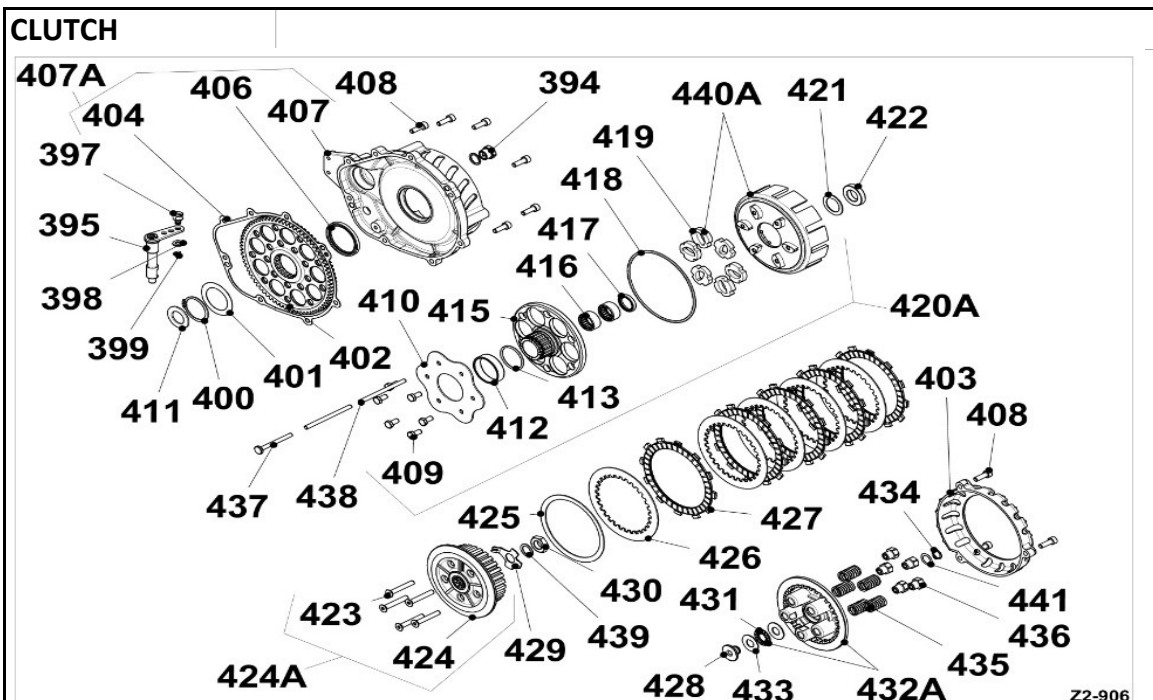
250	330.803	Ground cable Parilla all models
260	503.051	Spark plug >NGK BR10EG<
261	237.505	Spark plug cap PVL >X30 / MINI<
270	KA79	20 SELF LOCKING NUTS KIT M6
271	900.004	Washer 6-12x1,5mm
272	335.100	Coil dampener >Screamer<
273	330.215	Coil PVL >SCREAMER<
273	#N/B	#N/B
274	#N/B	#N/B
275	900.002	Washer Ø 5mm
276A	330.207	Ignition PVL >SCREAMER<
276A	#N/B	#N/B
277	#N/B	#N/B
278	290.880	Thrust washer internal 1.8mm
279	244.000	Sprocket / magneto nut (100 / 135cc)

Screamer IV



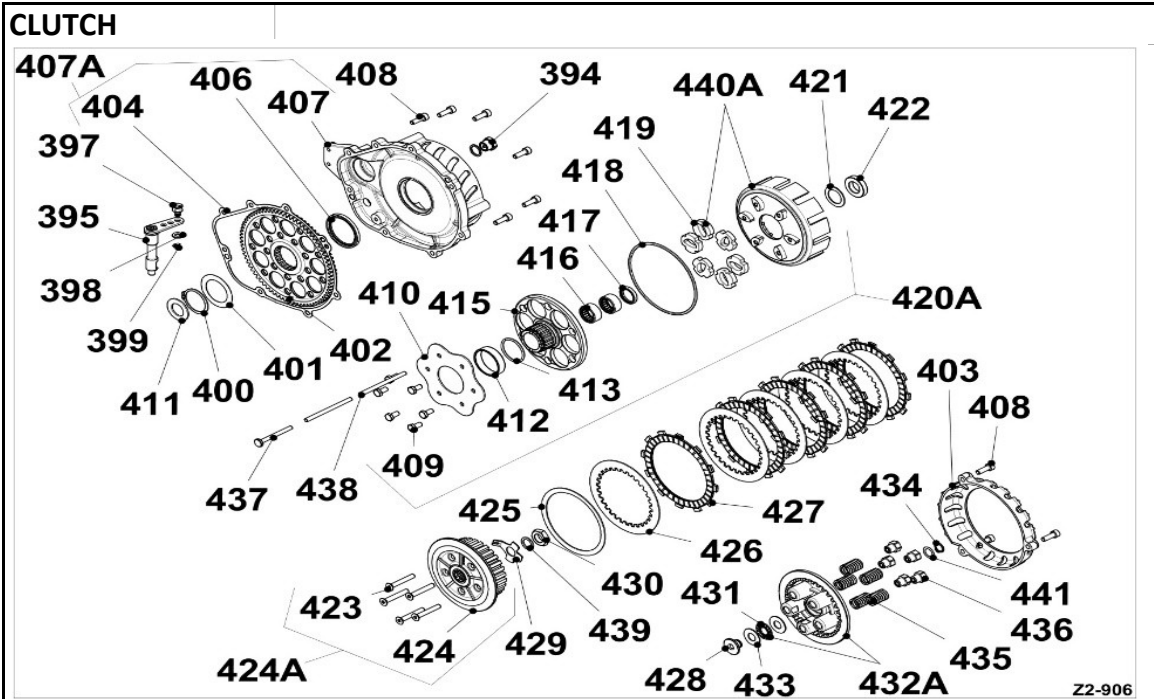
110	299.420	Forks guide shaft - primary-
302	#N/B	#N/B
305	903.026	KIT OF 20 ALLEN SCREWS 6X20
307	#N/B	#N/B
309	#N/B	#N/B
311	#N/B	#N/B
312	299.404	Shifting ratchet -selector- >Parilla KZ / Super Shifter<
313	299.406	Push pad spring >selector<
314	299.408	Ratchet push pad -selector-
315	#N/B	#N/B
316	299.412	Preselector cam >Parilla KZ / Super Shifter<
318	299.414	Ball bearing selector 6905 T1xC3 >KZ / Super Shifter<
319	299.417	Shift cam Screamer
320	299.418	Ball bearing 61902 T9-C4
321	#N/B	#N/B
322	#N/B	#N/B
323	#N/B	#N/B
324	#N/B	#N/B
326	#N/B	#N/B
327	299.433	Preselector shaft spring SCREAMER
328	299.441	Steel shim preselector Screamer
329	#N/B	#N/B
330	299.438	Seeger / shaft 18mm Screamer
331	#N/B	#N/B
332	#N/B	#N/B
333	#N/B	#N/B
334	900.289	Bolt TS TORX 5x10
336	#N/B	#N/B
337	299.452	Location lever spring Screamer
338	299.454	Needle IKO N3X9.8 AB2 Preselector cam >Parilla KZ / S. Shifter<

Screamer IV



394	299.685	Oil level gauge >OK-OKJ-KZ<
395	#N/B	#N/B
396	#N/B	#N/B
397	#N/B	#N/B
398	900.004	Washer 6-12x1,5mm
400	299.200	Seeger ring A35 DIN471 >Parilla KZ - X30<
401	299.202	Safety cone spring >Parilla KZ - X30<
402	#N/B	#N/B
403	#N/B	#N/B
404	299.209	Primary transm. cover gasket SCREAMER
406	299.213	Oil seal G42x52x4 Screamer
407	#N/B	#N/B
408	900.232	Hexagon socket screw 6x18
409	291.511	Starter wheel screw 1-pc M6x14
410	299.220	Shock absorber plate >Parilla KZ - X30<
411	299.240	Shim 34x20x2primary driven gear >Parilla KZ - X30<
412	#N/B	#N/B
413	299.226	O-R 3131 PS FPM 75 clutch >Parilla KZ - X30<
415	#N/B	#N/B
416	299.230	Needle bearing clutch >Parilla KZ - X30<
417	299.232	Oil seal clutch G20x26x4B >Parilla KZ - X30<
418	299.234	Oil seal O-R clutch >Parilla KZ - Super Shifter<
419	299.236	Damper shock absorber >Screamer - Super Shifter<
420A	#N/B	#N/B
421	299.222	Spacer ring PS 22x32x1 >Parilla KZ - X30<
422	299.242	Clutch drum spacer 31.3-17.5-6.6 >Parilla KZ - X30<
423	#N/B	#N/B
424	#N/B	#N/B

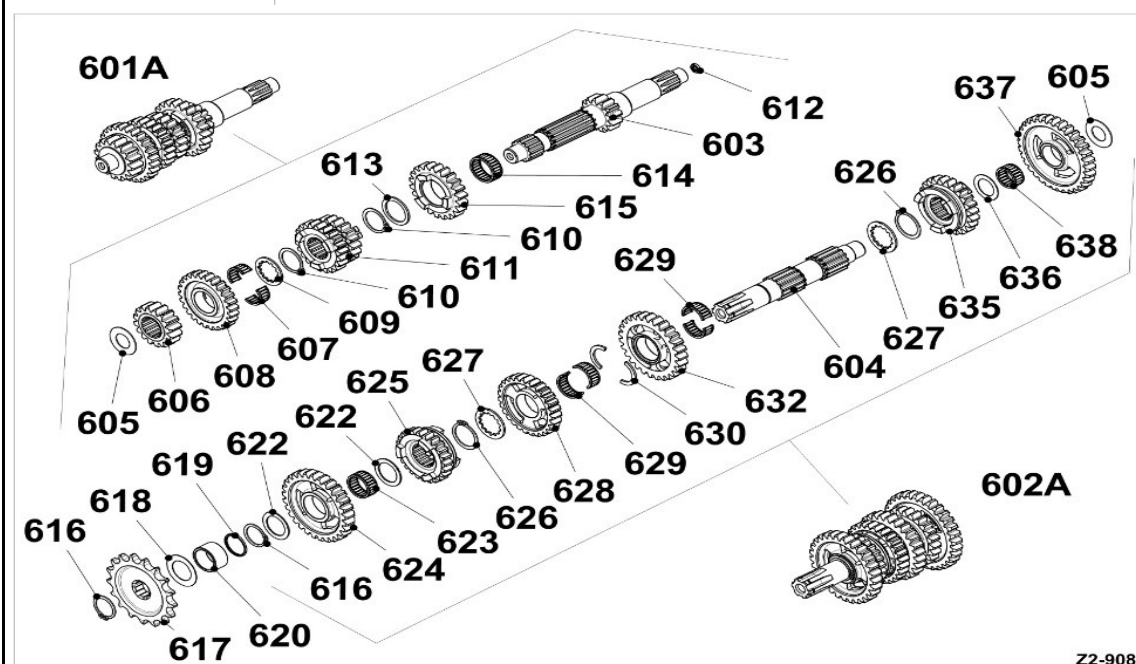
Screamer IV



425	299.248	Safety cone spring S. Shifter - KZ - SCreamer
426	299.250	Bare clutch disc S.Shifter - Screamer
426	299.253	Bare clutch disc ergal >Screamer R.T.<
427	299.252	Padded clutch disc S. Shifter - Screamer
427	#N/B	#N/B
428	#N/B	#N/B
429	299.256	Safety cone spring S.Shifter - Screamer
430	299.258	Nut M14x1 clutch S. Shifter - Screamer
431	#N/B	#N/B
432A	#N/B	#N/B
433	#N/B	#N/B
434	243.596	Clutch seeger ring 12x1
435	299.268	Thrust plate spring Screamer
436	299.269	Clutch spring retainer Screamer
437	299.272	Clutch push plate >Parilla KZ - X30<
438	299.274	Clutch push rod >Parilla KZ - X30<
439	299.275	Clutch nut washer
440A	#N/B	#N/B
441	299.265	Spacer ring Screamer

Screamer IV

GEARBOX

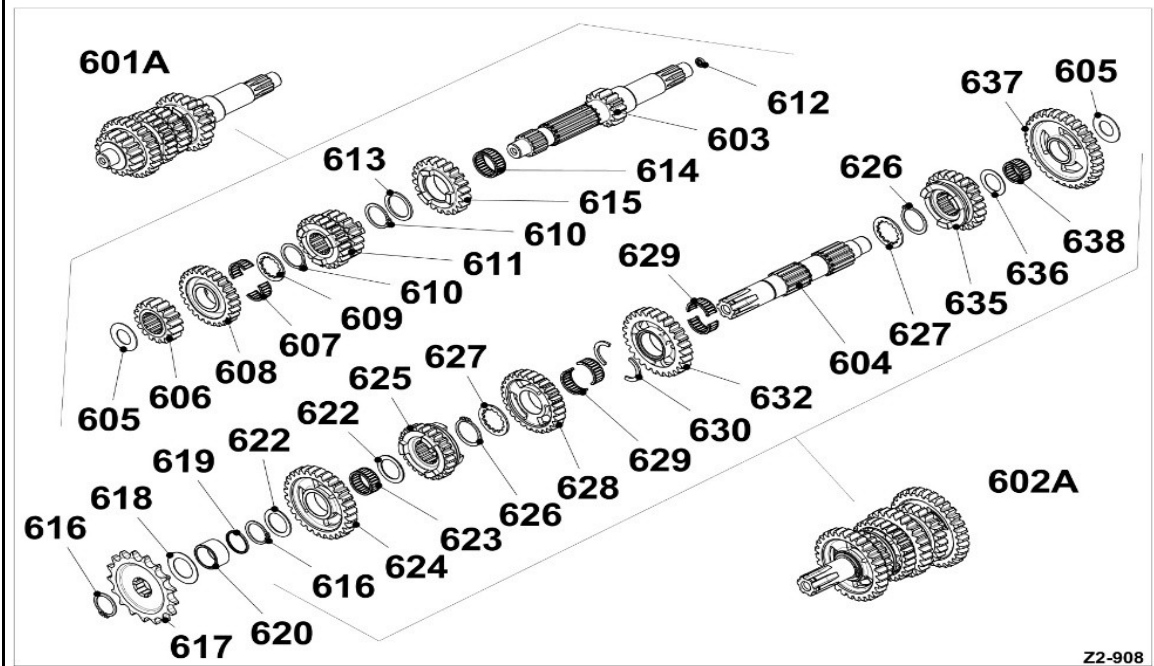


Z2-908

601A	#N/B	#N/B
602A	#N/B	#N/B
603	#N/B	#N/B
604	299.306	Secondary shaft KZ - Super Shifter / Screamer
605	299.308	Shim primary / secondary shaft >KZ / S. Shifter / Screamer 3<
606	299.310	Drive 2e gear primary
607	299.312	Plitted roller cage 18x22x10 -primary- >KZ - Super Shifter<
608	#N/B	#N/B
609	299.316	Splined shim 6th gear -primary- >KZ - Super Shifter<
610	299.318	Seeger ring A22 -primair- >KZ - Super Shifter<
611	299.320	Driver gear 3rd/4th primary
612	299.322	Oil seal 5x9x2 primary
613	299.324	Shim 5th gear primary
614	299.326	Roller cage 5th gear -primary- >KZ - Super Shifter<
615	299.328	Drive gear 5th primary
616	299.330	Seeger ring >Parilla KZ / Super Shifter<
617	243.700	Sprocket Parilla KZ / X30 T-15
617	243.701	Sprocket Parilla KZ / X30 T-16
617	243.702	Sprocket Parilla KZ / X30 T-17
617	243.703	Sprocket Parilla KZ / X30 T-18
617	243.704	Sprocket Parilla KZ / X30 T-19
617	243.705	Sprocket Parilla KZ / X30 T-20
618	299.332	Safety cone spring -AL- >Parilla KZ / Super Shifter<
619	299.334	O-Ring 2075 2nd gear -secondary-
620	299.336	Spacer front sprocket secondary
622	299.338	Spacer ring 2nd gear secondary
623	299.340	Roller cage K20 2nd gear .secondary- >KZ / Super Shifter<

Screamer IV

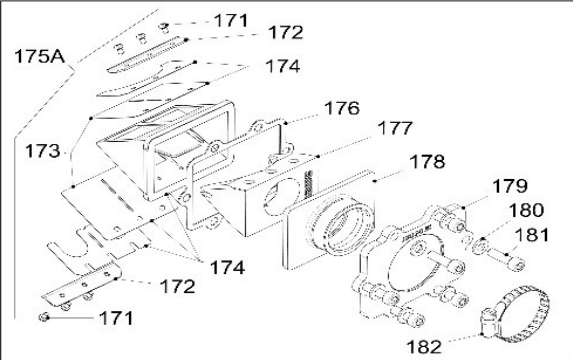
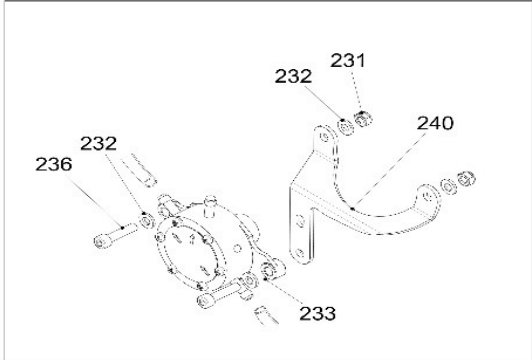
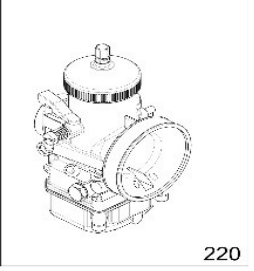
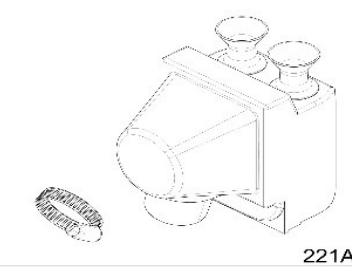
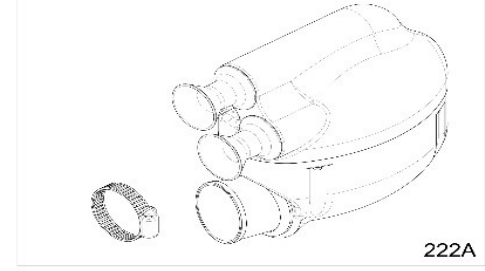
GEARBOX




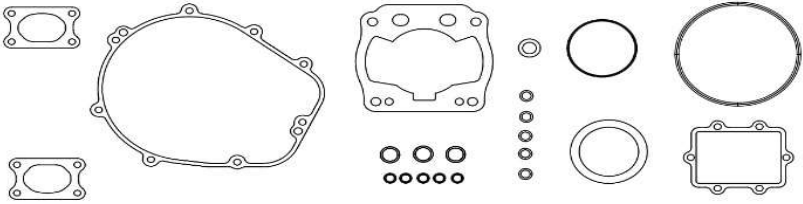

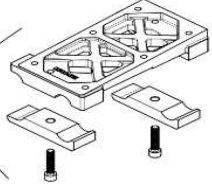
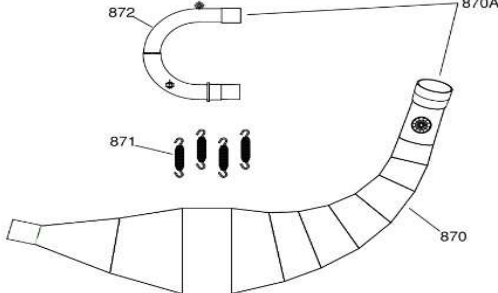
Z2-908

624	299.342	Driven gear 2nd gear
625	#N/B	#N/B
626	299.346	Seeger ring A24 -secondair- <Parilla KZ / Super SHifter>
627	299.348	Slined shim 4e versnelling - secondair- S.Shifter - Screamer
628	299.350	Driven gear 4th gear
629	299.352	Plit roller cage K20x24x10 -Secondary- Screamer
630	299.354	Half shim 3rd / 4th speed -Secondary-
632	299.356	Driven gear 3rd gear -Secondary-
635	299.358	Driven gear 5th gear -Secondary-
636	299.360	Shim 1st gear. -Secondary-
637	#N/B	#N/B
638	299.364	Roller cage K17 1st gear -Secondary-

Screamer IV

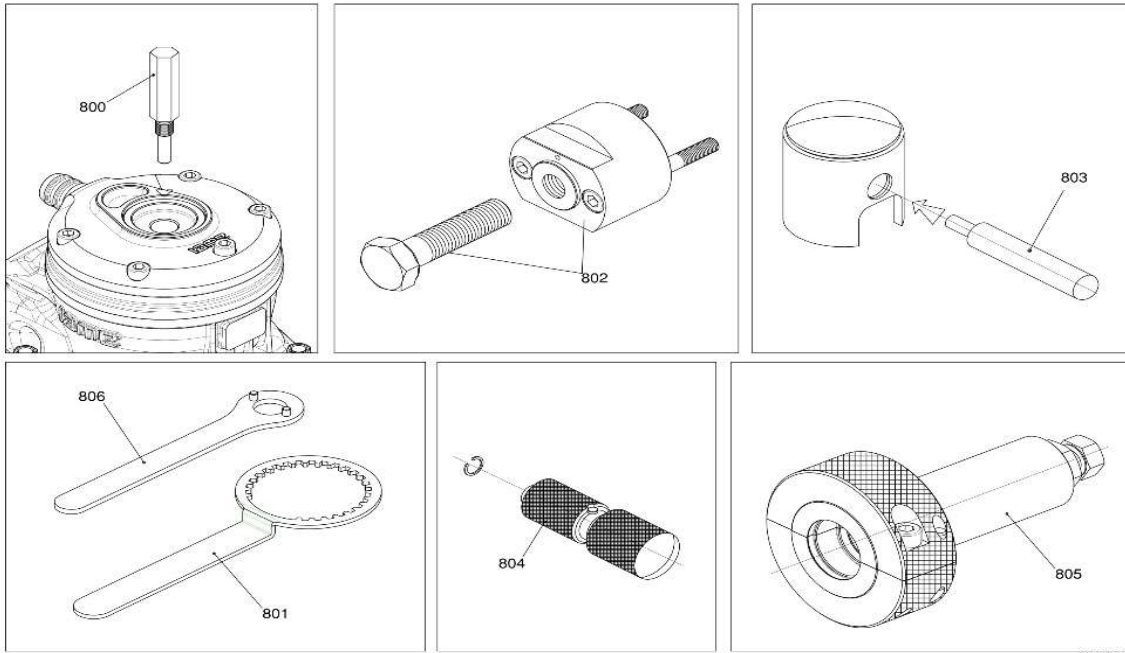
INLET	
 	
  	
	Z2-907
171	228.260 Reed clip screw >X30<
172	228.257 Reed petals locking plate S. Shifter - Screamer
173	228.246 Reed petal set KZ / Screamer
174	228.245 Reed petal kit + stop KZ / Screamer
175	#N/B #N/B
176	228.108 Carburetor manifold gasket>SCREAMER<
177	#N/B #N/B
178	#N/B #N/B
179	#N/B #N/B
180	#N/B #N/B
181	900.232 Hexagon socket screw 6x18
182	228.048 Clamb >PARILLA-KZ<
220	#N/B #N/B
231	KA79 20 SELF LOCKING NUTS KIT M6
232	900.004 Washer 6-12x1,5mm
233	#N/B #N/B
234	335.100 Coil dampener >Screamer<
236	900.234 Hexagon socket bolt 6x25
240	335.306 Fuel pump support braket Screamer

Screamer IV

EXHAUST SYSTEM & GASKETS		
 <p>861</p>	 <p>860A</p>	
 <p>862</p>		
 <p>894</p>	 <p>870, 870A, 871, 872</p> <p>Z2-910</p>	
860A	214.901	Gasket set Sreamer
861	575.005	Pipe fitting seal >IAME<
862	575.000	Silikon 250 special gasket
870A	#N/B	#N/B
871	#N/B	#N/B
872	267.533	Silencer header > X30 Shifter - KZ< - 26/28mm
894	#N/B	#N/B

Screamer IV

TOOLS



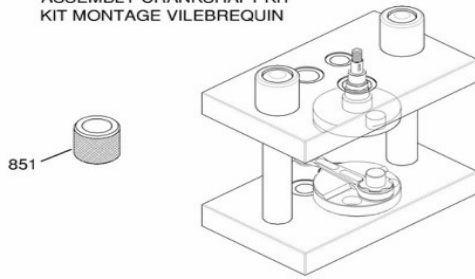
Z2-912

800	KA82	PISTON STROKE LOCKER
801	574.030	Clutch locking tool >Screamer - Super Shifter<
802	572.046	Rotor puller PVL/SELETTRA Screamer
803	574.035	Piston pin punch >15mm Super Shifter<
804	574.037	Circlip assembly tool 15mm
805	573.520	Bearing ring puller 6205
806	572.050	Magneto wrench PVL

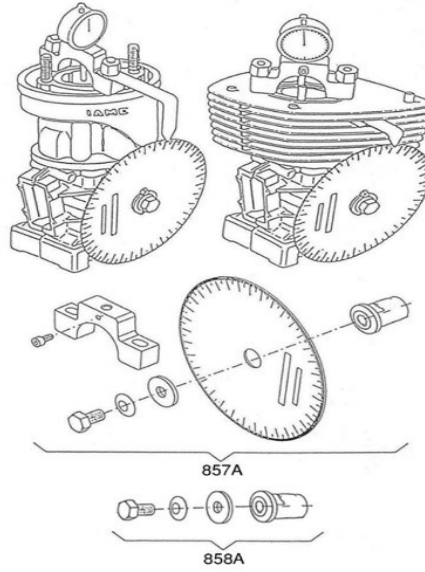
Screamer IV

ASS.CRANKSHAFT TOOL

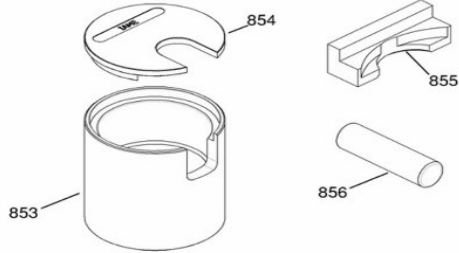
850A KIT MONTAGGIO ALBERO
ASSEMBLY CRANKSHAFT KIT
KIT MONTAGE VILEBREQUIN



GRUPPO CONTROLLO FASE
TIMING CONTROL GROUP
GROUPE CONTROL DISTRIBUTION



852A KIT SMONTAGGIO ALBERO
CRANK DISASSEMBLING KIT
KIT DEMONTAGE VILEBREQUIN



KT-013

850A	574.101	Crankshaft assembly tool
851	574.103	Crankpin bush >X-30 - KF - KZ<
853	574.115	Crankshaft disassembling tool without plate
854	574.117	Crankshaft plate >X-30 / KF / KZ<
855	574.108	Crankshaft insert 125cc / X-30 / KF
856	574.104	Crankpin pusher
857A	KA86	TIMING CHECK DISC TaG/REEDSTER
858A	#N/B	#N/B